

## STOCKHOLM/Skavsta

## ILS or LOC RWY 26

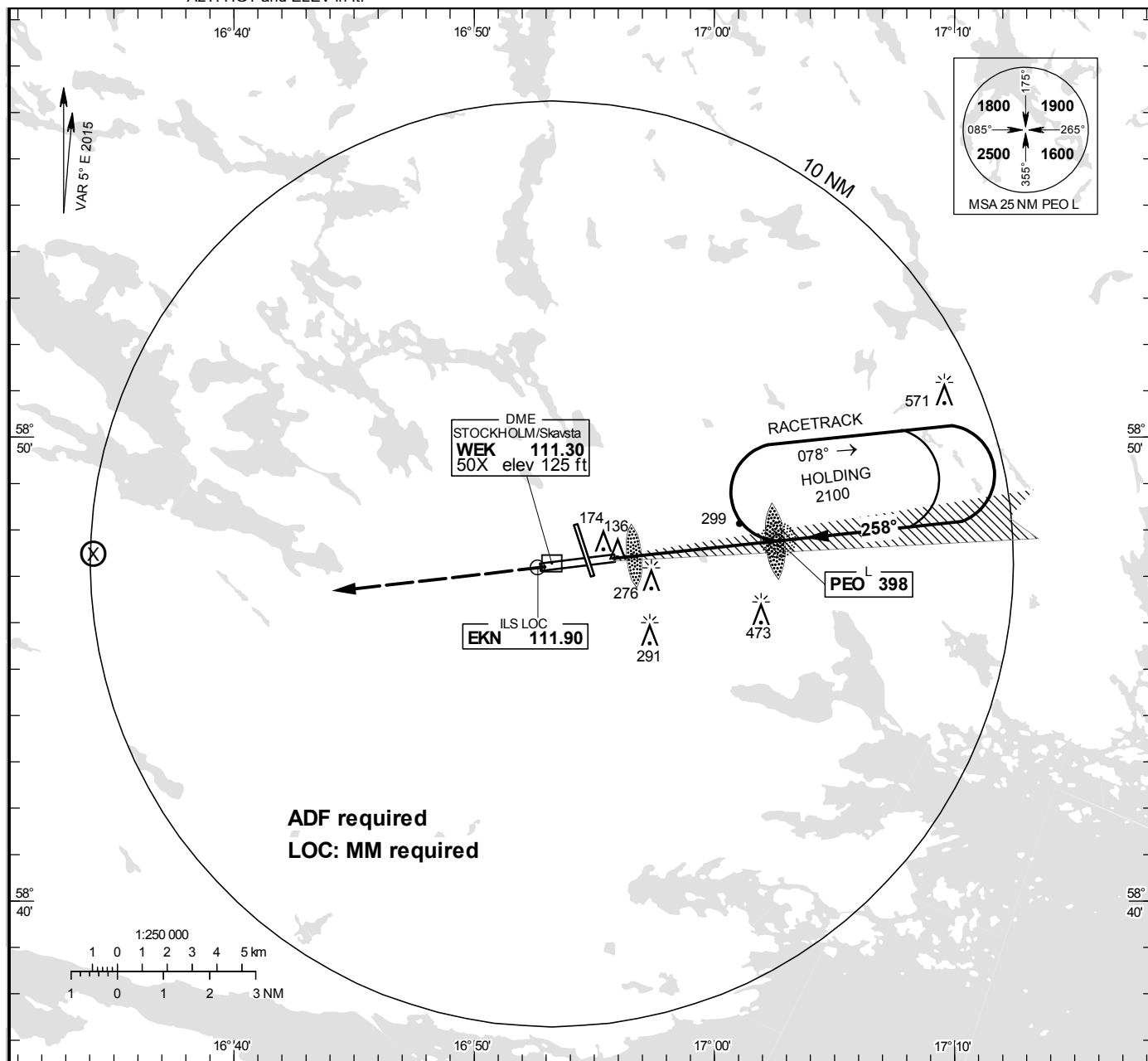
INSTRUMENT  
APPROACH  
CHART – ICAO

THR ELEV 127.8 ft, AD ELEV 142 ft

OCH are related to THR.  
Circling OCH are related to AD ELEV.  
BRG are MAG  
ALT, HGT and ELEV in ft.

SKAVSTA TOWER

127.705



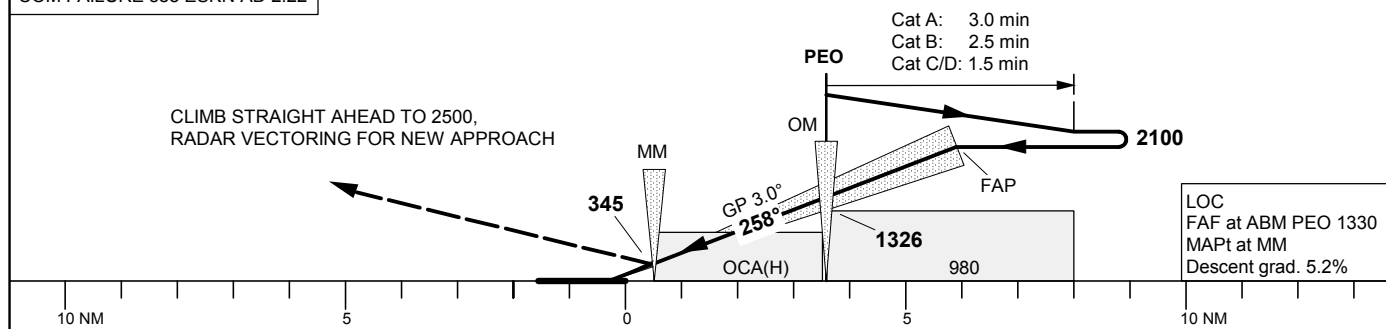
TA 5000 ft AMSL

RDH 53.8 ft

Max speed within racetrack 220 kt IAS

\*Timing not authorized for defining the MAPt

COM FAILURE see ESKN AD 2.22

CLIMB STRAIGHT AHEAD TO 2500,  
RADAR VECTORED FOR NEW APPROACHCat A: 3.0 min  
Cat B: 2.5 min  
Cat C/D: 1.5 min

OCA (H)					Final approach	LOC Distance FAF-MAPt 3.1 NM*							
Cat of ACFT		A	B	C	D	DME WEK NM	4			3			
Straight-in Approach	CAT I	274 (147)	283 (156)	293 (166)	305 (178)	ALT	1030			710			
	LOC	550 (430)				GS	kt	80	100	120	140	160	180
Circling		580 (440)	640 (500)	870 (730)	870 (730)	Time	min:s	2:19	1:51	1:32	1:19	1:09	1:02
						Rate of descent	ft/min	425	530	635	745	850	955

CHANGE: Editorial